

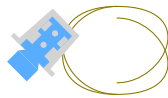
Quick Start Guide

The ultrasonic NextMeter Outdoor (NM5-0) integrates advanced solid-state measuring technology with the NextCentury wireless platform, packaged inside a weatherproof body designed for outdoor use.

Package Contents



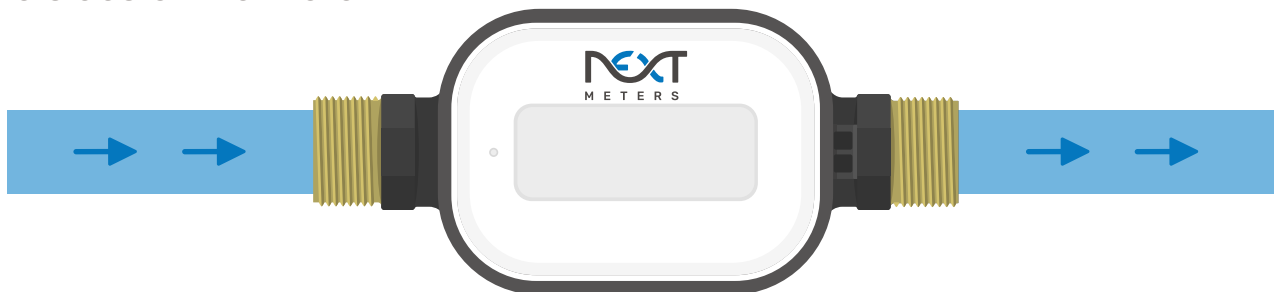
Next Meter
Outdoor



Wire
Security

Water Flow

Ensure the flow of water matches the direction of the arrow indicators on the sides of the meter.

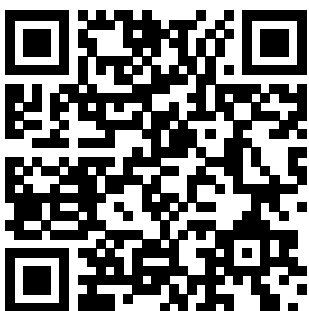


NextConnect™ Technology

The NextMeter Outdoor has built-in cellular connectivity for direct communications with the cloud, a fixed-network, and walk-by and drive-by technology for built-in redundancy.

To enable a new communication method, select the appropriate subscription tier in the NextCity web portal or mobile app.

Additional Resources



For full installation guide, spec sheets, and additional resources, please visit: products.nextcenturymeters.com/nm5-0

Contact Information

Phone: (844) 538-8203

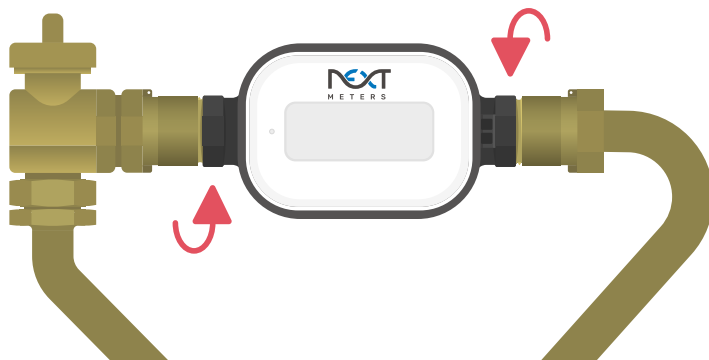
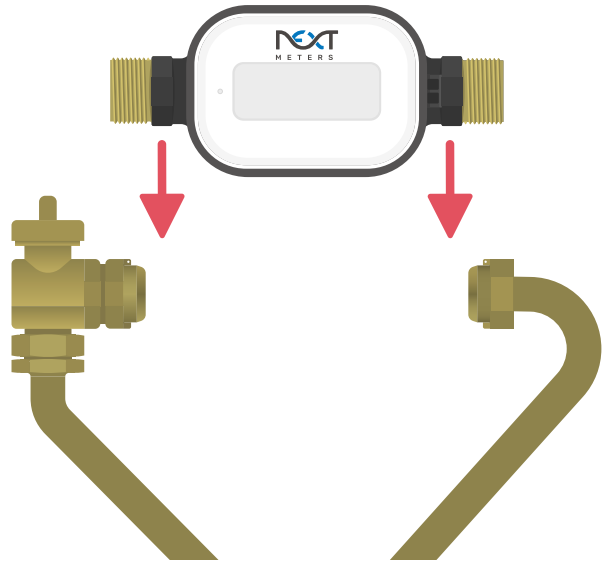
Email: support@nextmeters.com



Installation

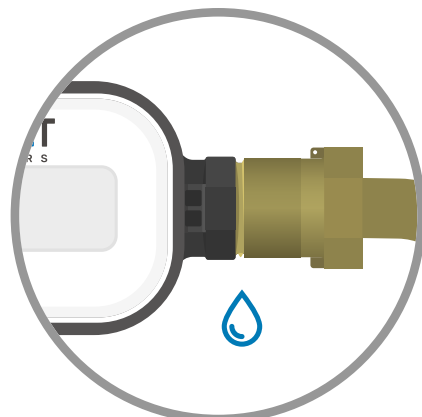
Before installation, ensure that the water line has been turned off and that the meter connection is the correct size. Use couplings when necessary.

- 1) Place the meter on the meter setter



- 2) Tighten both ends to a max torque of 15 ft-lb.

- 3) Pressurize line and check for leaks at each connection.

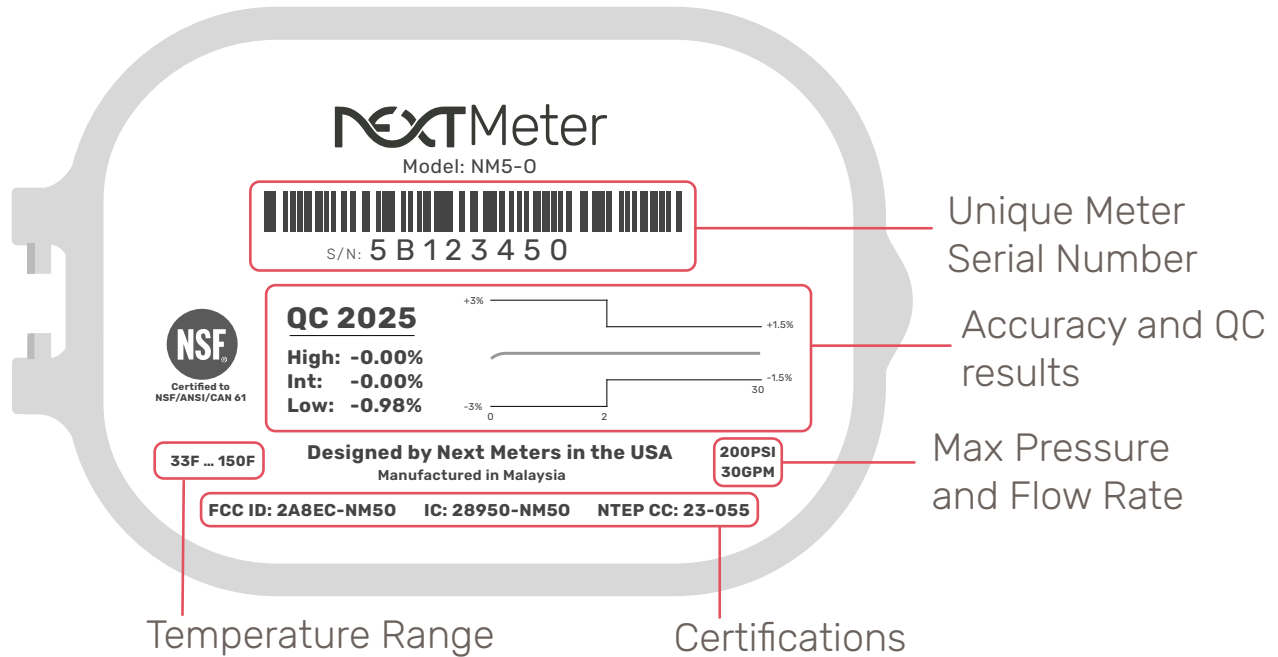




Information

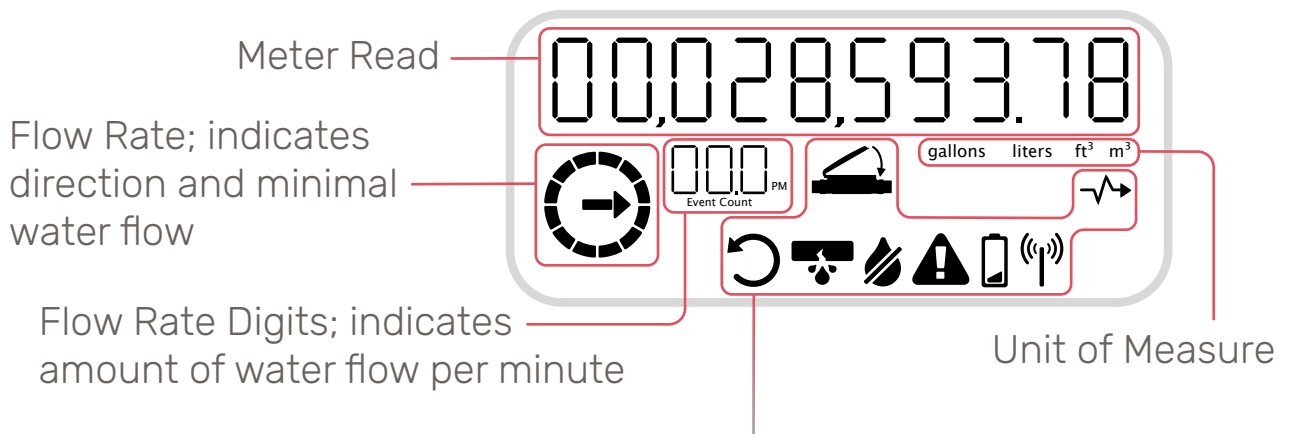
Meter Label

Detailed and meter-specific information can be found on the underside of the NextMeter register lid.



LCD Screen

Lift the register lid to activate the NextMeter LCD.



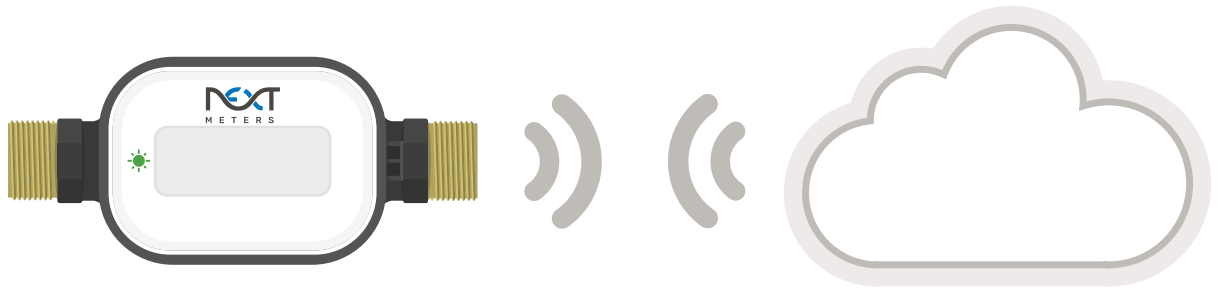
Reverse Flow; backflow of water detected	Burst pipe or severe water leak detected	Transmitting meter read data
LCD display is inactive; close lid, then open again to view	Freeze detected	Wired output; pulse is active
Water Leak detected	Battery has less than 10 months remaining	No water detected in the meter



Cloud Connected

Wireless Made Easy

When installing the NextMeter, you can instantly know if everything is working correctly by opening the NextMeter register lid. The Meter's RF LED will blink  green when it is able to communicate with the Cloud.



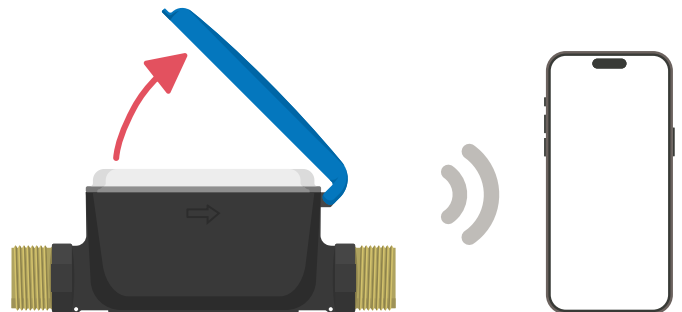
Programming

Programming associates the NextMeter's serial number with its location.

Programming the NextMeter can be completed quickly on the NextCity Web Portal via the CSV file upload tool. You can also use the programming tool in the NextCity mobile app for on-site programming and verification.

App Configuration

The NextCity App allows for additional configuration options. Lift the register lid and connect to the meter in the App.



Mobile App Download

